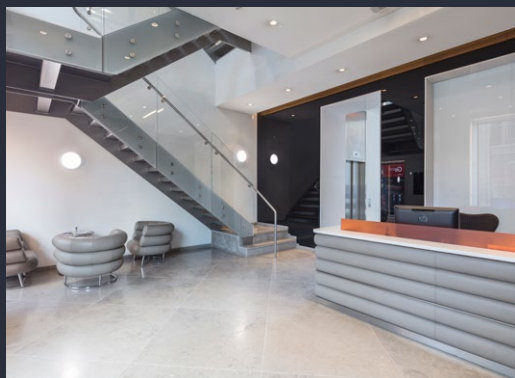


A modern office interior featuring a prominent staircase with a glass railing and a lounge area with three leather armchairs and a small table. The space is bright and minimalist, with a polished floor and recessed lighting.

55 STRAND WC2

3,114 SQ FT OF PRIME OFFICE SPACE



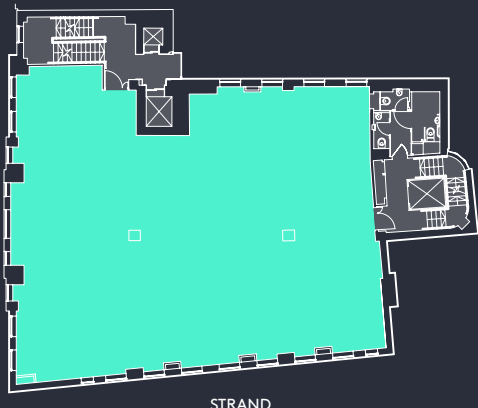
SUMMARY SPECIFICATION

- Air conditioning
- On site pilates studio
- 28 bike spaces & 7 showers
- Passenger lifts
- Full accessed raised floor
- 50MB fibre line in sit
- LED lighting
- Double height entrance
- Commissionaire

CONNECTIVITY

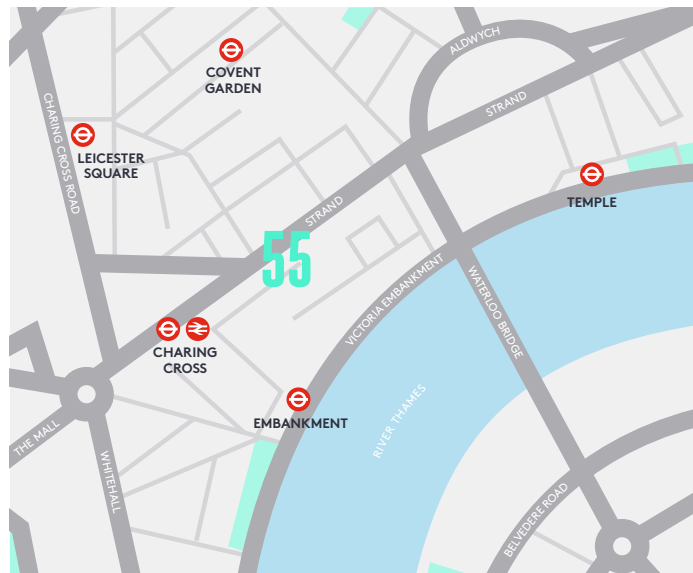


4TH FLOOR PLAN - 3,114 SQ FT (289 SQ M)



STRAND

Plan not to scale, for indicative purposes only.



VIEWINGS

Strictly through sole letting agent.

Chris Watkin
020 7167 6402
chris@bluebooklondon.co.uk

TERMS

Upon application.

Cathy Griffiths
020 7167 6410
cathy@bluebooklondon.co.uk

55STRAND.COM

BLUEBOOK
020 7167 6400

These particulars do not constitute a contract. Prospective occupiers must not rely upon the details herein as statements of facts or representations and must satisfy themselves as to their accuracy. March 2018.